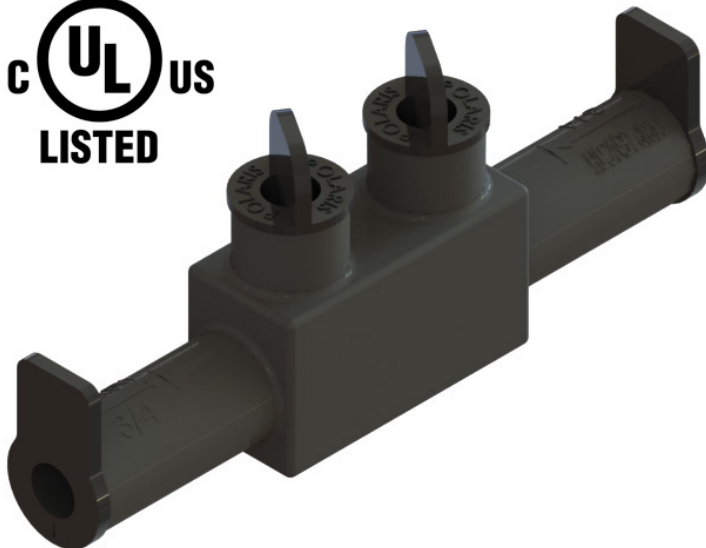




Utility - Metering and Streetlighting Products

**SSWB - Submersible Splice Connectors**

- \* Manufactured from high strength 6061-T6 aluminum alloy to provide premium electrical and mechanical performance
- \* Rubber encapsulated with a nominal thickness of 125 mils
- \* Dual rated for copper or aluminum conductors
- \* Meets or exceeds ANSI C119.1 specifications for a submersible connection.
- \* UL listed for wet or damp locations, direct burial and submersible per UL486D
- \* Range taking design reduces inventory
- \* Rated for 600 Volts



SSWB2/0P

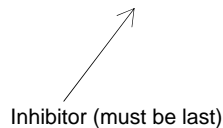
Catalog Number	Hex Size	Dimensions, Inches			Wire Range KCMIL
		L	W	H	
SSWB2/0P	3/16"	5.05	0.88	2.1	2/0 - #14
SSWB350P	5/16"	8.28	1.31	3.06	350 - #12

OPTIONS:

OC - Orange thread caps

For omission of oxide inhibitor delete suffix "P"

Example:  
SSWB2/0P



Consult factory for additional configurations not listed