

POLARIS OEM PRODUCTS

Panelboard Solderless lugs

TYPE: P2CLS/P3CLS/P4CLS

- * Manufactured from high strength 6061-T6 aluminum alloy to provide premium electrical and mechanical performance
- * Electro-Tin plated to provide very low contact resistance and inhibit corrosion
- * Suitable for use with either copper or aluminum conductors
- * Rated for 600 Volts
- * Chamfered wire entry provides ease of installation
- * UL Listed to 90 Deg C

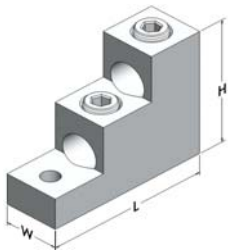


Figure 1

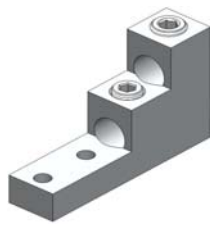


Figure 2

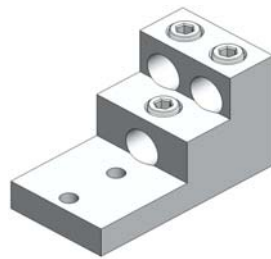


Figure 3

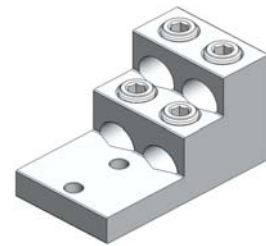


Figure 4

Catalog Number	Fig. No.	Wire Range AWG	Wire Range MM	Stud Size	Dimensions, Inches			Hex Size
					H	W	L	
P2CLS300-(5/16)	1	300 - 6	150 - 16	5/16	2.00	1.00	3.00	5/16
P2CLS500-2(3/8)	2	500 - 4	240 - 25	3/8	3.00	1.50	4.91	3/8
P2CLS600-2(3/8)	2	600 - 2	300 - 35	3/8	3.00	1.50	4.91	3/8
P2CLS750-2(3/8)	2	750 - 1/0	400 - 70	3/8	3.00	1.50	4.91	1/2
P3CLS500-2(3/8)	3	500 - 4	240 - 25	3/8	3.00	2.50	4.91	3/8
P3CLS600-2(3/8)	3	600 - 2	300 - 35	3/8	3.00	2.50	4.91	3/8
P3CLS750-2(3/8)	3	750 - 1/0	400 - 70	3/8	3.00	2.63	4.91	1/2
P4CLS500-2(3/8)	4	500 - 4	240 - 25	3/8	3.00	2.50	4.91	3/8
P4CLS600-2(3/8)	4	600 - 2	300 - 35	3/8	3.00	2.50	4.91	3/8
P4CLS750-2(3/8)	4	750 - 1/0	400 - 70	3/8	3.00	2.63	4.91	1/2

* Oxide Inhibitor is recommended for all aluminum terminations.

* Other mounting configurations available.

POLARIS CUSTOMER SERVICE : 877-584-5847